

**DALLAS HUNTER JUMPER SCHOLARSHIP CIRCUIT  
SEASON OPENER HORSE SHOW  
MARCH 23-24, 2019**

**Location:** Texas Rose Horse Park  
14078 State Hwy 110N, Tyler TX 75704  
(903)882-8696 [www.texasrosehorsepark.com](http://www.texasrosehorsepark.com)  
From I-20 take the TX-110 exit (548), turn south on TX-110 & go approximately one mile. TRHP will be on your left.

**Recognized By:** Dallas Hunter Jumper Scholarship Circuit  
Part of every entry fee is contributed to the Scholarship Fund to be distributed at the annual banquet!

**SHOW OFFICIALS**

**Judges:** Julie Benton  
Cindy Pursell-- R  
Shannon Fenney  
Stacie Goodson-- R

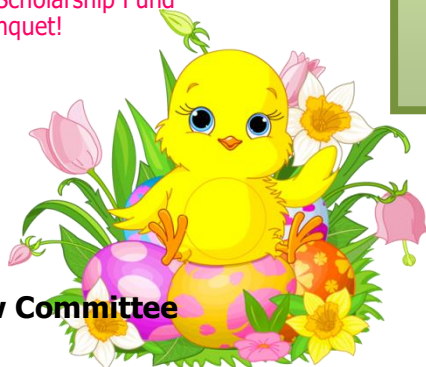
**Manager:** James Sawtelle & DHJSC Show Committee

**Course Designer:** DHJSC Show Committee

**Show Office:** Laura Brown

**Show Committee:** Molly Hunt, Julie Holmquest, Gabriele Berta

**EMAIL ENTRIES TO:**  
[molly@huntersgatestables.com](mailto:molly@huntersgatestables.com)  
**ENTRIES DUE:** March 18th , 6:00 PM  
or receive Late Fees



**2019 DHJSC Season Opener Featuring:**

\$2,000 DHJSC 2'6" Junior/ Amateur  
Hunter Derby- Saturday Morning  
*Sponsored by AMERICAN NATIONAL*



\$1,500 DHJSC 2'9"-3' Jumper Classic-  
Sunday Morning  
*Sponsored by SHOOTING CHEF*



\$500 2' & 2'3" Junior/Amateur Hunter Classic-  
Sunday

*Sponsored by MERRIWOOD RANCH*

\$500 2'6" Jumper Classic- Saturday

*Sponsored by HIDDEN OAK RANCH*

**Lead Line Class During Derby Saturday Morning**

**GOLF CART DECORATING CONTEST**

to be judged Saturday At the conclusion of the show

**Everyone is invited:**

Friday Evening Welcome Party & Bonfire-  
*Sponsored by Stony Glen Stables*


Saturday Morning Derby Breakfast  
*Sponsored by Silent Knight Stables*

Saturday Lunch  
*Sponsored by DHJSC*

Sunday Morning Breakfast during Jumper Classic  
*Sponsored by Bridlewood Stables & Equestrian Center*

*Points, Photos, Info, and more!*  
[www.dallashunterjumper.org](http://www.dallashunterjumper.org)  
*Prizes Provided By:*

Wanna keep up with DHJSC?

Follow us on...  Dallas Hunter Jumper Scholarship Circuit



@dallas\_scholarship



@DHJSC1



## RULES AND REGULATIONS

**ENTRIES:** There will be a post entry fee of \$5 per class if entered after March 18th!

Class fees are \$15 with the exception of ADDBACKS which are \$25. No numbers will be issued without an open check. Current coggins must be presented to the horse show office for all horses on the grounds.

**Please note barn affiliation on entry form and check.**

Entries may be emailed to Molly Hunt at [molly@huntersgatestables.com](mailto:molly@huntersgatestables.com)

**HUNTER DERBY AND 2'9"-3' JUMPER CLASSIC** are \$50 for members and \$100 for non-members

**JUNIOR/AMATEUR HUNTER CLASSIC and 2'6" JUMPER CLASSIC** are \$20 for members and \$50 for non-members.

In order to be eligible for Derby or Classics, riders must compete in a full regular division.

**FEES & REFUNDS:** \$30.00 office and awards fee will be charged for every horse & rider combination. Once the show has started, proper notification of the scratch must be made in the show office BEFORE the start of the class or classes being scratched or else the class fee may be charged. Non-members will be charged a non-member fee of \$30 per show. Returned checks are subject to a \$25 fee. A \$15 service fee may be applied to open checks not closed by the conclusion of the show.

**STABLING:** Stalls- \$85.00 – Shavings \$10.00 per bag (minimum of 3 bags) – Ground fees - \$35.00 for all non stabling horses. Stall reservations must be made in advance, late stall fees \$100.00

**SCHOOLING:** Schooling on Friday in all rings from noon to dark and Saturday and Sunday from daybreak to 30 minutes prior to ring starting.

**FOOTING:** Warm Up areas and Competition arenas are all-weather footing.

**DOGS:** All dogs on the property must be held on a leash.

**RETURNED CHECKS:** A \$25.00 fee will be charged for all returned checks.

**ATTIRE: SEI APPROVED HELMETS MUST BE WORN BY ALL RIDERS WHILE MOUNTED.** Riders must be properly attired – no chaps. Numbers must be worn and clearly visible.

**RIBBONS, TROPHIES and CHAMPIONSHIP:** All classes receive a prize and 6 ribbons. All Divisions will be awarded Champion and Reserve ribbons using the standard tally system: 10, 7, 5, 3, 2, 1. In the event of a tie, management will break the tie by over fences points. Champion rosette and trophy will be awarded and Reserve rosettes.

**CHANGES:** Management reserves the right to change, cancel or combine classes, alter courses and do all things necessary to compensate for excessive or inadequate entries. Divisions with less than 3 entries may be canceled or combined.

**CONCESSIONS:** Concessions Sat. and Sun 7:00 AM to conclusion of show.

**RESPONSIBILITY:** Submission of entry to these shows constitutes an agreement to the following: Exhibitor agrees to indemnify and hold harmless TRHP and DHJSC officials against any claim, demands, costs and expenses, including reasonable attorney fee for the defense thereof, arising from the conduct or management of Exhibitor's business or its use of the premises or from any breach on the part of Exhibitors of any conditions of this Agreement, or contractors, agents, employees, guests, or invitees in or about the premises. In case of any action or proceeding brought against TRHP and DHJSC Management by reason of any such claim. Exhibitor, upon notice, covenants to defend such action or proceeding by council acceptable to owner. Exhibitor is responsible for his/her own property and TRHP and DHJSC Management is not responsible for accidents, fire, or theft. It is the responsibility of the show management, exhibitors, trainers, and spectators to conduct themselves in a civilized and sportsmanlike manner. It is the responsibility of all trainers and exhibitors to be familiar with the DHJSC Rulebook.

RV Space, golf cart rental, feed orders: [texasrosehorsepark.com/\(903\)882-8696](http://texasrosehorsepark.com/(903)882-8696)

### **\$2,000 DHJSC 2'6" JUNIOR/AMATEUR HUNTER DERBY:**

Class 113 \$50 for members and \$100 for non-members

**Class Sponsor: American National**

**Awards Sponsor: Silent Knight Stables & CWD**

Fences 2'6", Options 2'9"

Order of go to be posted at 6:00 pm Friday evening. To be held in a two-round format with a Classic Hunter first round and the Top 12 called back for the Handy Hunter second round with up to ten bonus points awarded for handiness. Cutoff to enter or scratch is 6:00 PM Friday. Entries received after this point must go at the top of the order. Scratches received after this point will still be charged for the class.

1<sup>st</sup>-\$560 2<sup>nd</sup>-\$400 3<sup>rd</sup>-\$320 4<sup>th</sup>-\$280 5<sup>th</sup>-\$240 6<sup>th</sup>-\$200

### **\$1,500 DHJSC 2'9"-3' JUMPER CLASSIC:**

Class 115 \$50 for members and \$100 for non-members

**Class Sponsor: Shooting Chef**

**Awards Sponsor: Spellbound Farm & Braids and Bonnets**

2'9"-3' Jumper Classic open only to riders competing in Schooling, Low, or High Jumpers. Order of go to be posted at 6:00 pm Saturday evening. Cutoff to enter or scratch is 6:00 PM Saturday. Entries received after this point must go at the top of the order. Scratches received after this point will still be charged for the class. To be held in Table IIb format.

1<sup>st</sup>-\$420 2<sup>nd</sup>-\$300 3<sup>rd</sup>-\$240 4<sup>th</sup>-\$210 5<sup>th</sup>-\$180 6<sup>th</sup>-\$150

### **\$500 2'-2'3" JUNIOR/AMATEUR HUNTER CLASSIC:**

Class 114 \$20 for members and \$50 for non-members.

**Class Sponsor: Merriwood Ranch**

**Awards Sponsor: Confederate Park Farm & Equine Edibles**

To be held in Ring 2 on Sunday. Open to 2' and 2'3" riders only. First round to be scored from hunter round. Second classic round to follow first round. Highest cumulative score will win. All classic rounds must be over the highest height at which the horse competes.

1<sup>st</sup>-\$140 2<sup>nd</sup>-\$100 3<sup>rd</sup>-\$80 4<sup>th</sup>-\$70 5<sup>th</sup>-\$60 6<sup>th</sup>-\$50

### **\$500 2'6" JUMPER CLASSICS:**

Class 116 \$20 for members and \$50 for non-members.

**Class Sponsor: Hidden Oak Ranch**

**Awards Sponsor: Braids and Bonnets & Equine Edibles**

2'6" Jumper Classic open only to riders competing in Baby and Puddle jumpers. Cutoff to enter or scratch 2'6" Jumper Classic is 8:00 AM Saturday. Entries received after this point must go at the top of the order. Scratches received after this point will still be charged for the class.

1<sup>st</sup>-\$140 2<sup>nd</sup>-\$100 3<sup>rd</sup>-\$80 4<sup>th</sup>-\$70 5<sup>th</sup>-\$60 6<sup>th</sup>-\$50

### **Lead Line:**

**Awards Sponsor: Hunters Gate Stables**

Class 55 Participation is Free

Open to riders 8yrs and under. Participants may not enter any other division at this show. All horses/ponies must be lead by person over 12yrs of age. Will be held during the first and second round of Derby Saturday morning.

## Hunter Divisions

Classes will be judged on performance and soundness

Individual Classes: \$15, Section Fee: \$45



### **Division 3. Open Hunter – 2' – 2019 Division Sponsor Spellbound Farm**

Open to ALL horses and riders. Fences 2', No Oxers!  
7,8, 9 (U/S)

### **Division 4. Maiden Hunter - 2' - 2019 Division Sponsor Merriwood Ranch**

Open to any junior/amateur rider who has not previously won four (4) blue ribbons over fences at 2' or higher in DHJSC or similar shows. Fences 2'  
10,11, 12 (U/S)

### **Division 5. Junior/Amateur Hunter – 2'3" - 2019 Division Sponsor Whittle Family**

Open to junior and amateur riders. Fences 2'3"  
13,14, 15 (U/S)

### **Division 6. Pony Hunter – 2019 Division Sponsor Stony Glen Stables**

Open to junior riders on ponies. Fences: small 2', medium 2'3", large 2'6"  
16, 17, 18 (U/S)

### **Division 7. Baby Green Hunter – 2019 Division Sponsor Roberts Family**

Open to horses and ponies in their first two years of showing. Fences 2'6"  
19,20, 21 (U/S)

### **Division 8. Junior/Amateur Hunter – 2'6" – 2019 Division Sponsor Silent Knight Stables**

Open to junior and amateur riders. Fences 2'6" -  
22,23,24 (U/S)

### **Division 9. Modified Child/Adult Hunter – 2019 Division Sponsor Lake Country Animal Hospital**

Open to any junior or amateur riders. Fences 2'6"-2'9" -  
25,26, 27 (U/S)

### **Division 10. Low Hunter – 2019 Division Sponsor Eagle Mountain Equestrian Center**

Open to ALL horses and riders. Fences 2'9"  
28,29, 30 (U/S)

### **Division 11. 3' Working Hunter - 2019 Division Sponsor Hunters Gate Stables**

Open to ALL horses and riders. Fences 3'  
31, 32, 33 (U/S)

### **Division 12. 3'3" Working Hunter –**

Open to ALL horses and riders. Fences 3'3"  
34, 35, 36 (U/S)

## Jumper Divisions

Individual Classes: \$15, Section Fee: \$45

### **Division 13 – Baby Jumpers ( 2' ) – 2019 Division Sponsor Wood Family**

37,38,39

### **Division 14 - Puddle Jumpers (2'3"-2'6") – 2019 Division Sponsor The Jumpers of Merriwood**

40,41,42 P&S

### **Division 15 – Schooling Jumpers (2'9"-3') – 2019 Division Sponsor Confederate Park Farm**

43,44,45 P&S

### **Division 16 – Low Jumpers (3'-3'3") – 2019 Division Sponsor Wood Family**

46,47,48 P&S

### **Division 17 - High Jumpers (3'6") - 2019 Division Sponsor StoryBook Sport Horses**

49,50,51 P&S

## Add Backs - \$25.00

A, E – 2'6"- I, J – Modified, B, F 2'9" – 3'3" C, G – 2' D,H – 2'3" - Pony  
K, N – Walk/Trot Poles L, O – Walk/Trot Crossrails M, P – Short Stirrup

## Hunt Seat Equitation Divisions

All classes are to be judged on seat, hands, guidance and control of mount.

Individual Classes: \$15, Section Fee: \$45

### **Division 18. Walk-Trot Rider Equitation over Poles – 2019 Division Sponsor Hidden Oak Ranch**

Open to riders in their first year of showing. Can only cross-enter into Div. 1.  
52, 53, 54 (Flat)

### **Division 1. Walk-Trot Rider Equitation over Cross Rails – 2019 Division Sponsor Hidden Oak Ranch**

Open to riders in their first two years of showing. Fences less than 18"  
1,2, 3 (Flat)

### **Division 2. Short/Long Stirrup Equitation – 2019 Division Sponsor Bridlewood Stable & Equestrian Center**

Open to riders in their first two years of showing. Fences 18"  
4,5, 6 (Flat)

101 Maiden Equitation – Fences 2" Entry Fee: \$15

2019 Year sponsor Gibbons Family

102 Maiden Equitation – Flat Entry Fee: \$15

103 Jr/Am Equitation – Fences 2.3" Entry Fee: \$15

2019 Year sponsor Berge Family

104 Jr/Am Equitation – Flat Entry Fee: \$15

2019 Year sponsor Berge Family

105 Jr/Am Equitation – Fences 2'6" Entry Fee: \$15

2019 Year sponsor Blaylock Family

106 Jr/Am Equitation – Flat Entry Fee: \$15

2019 Year sponsor Blaylock Family

107 Modified Child/Adult Equitation – 2'6"-2'9" Entry Fee: \$15

2019 Year sponsor Holmquest Family

108 Modified Child/Adult Equitation – Flat Entry Fee: \$15

109 Jr/Am Equitation – Fences 3' Entry Fee: \$15

2019 Year sponsor Harrel Family

110 Jr/Am Equitation/Flat Entry Fee: \$15

2019 Year sponsor Harrel Family

111 Equitation Challenge- Ring 1 Entry Fee: \$15

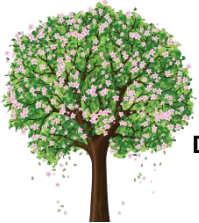
2019 Year sponsor Hunt Family

112 Equitation Challenge- Ring 2 Entry Fee: \$15

2019 Year sponsor The Hunters of Merriwood

**Thank you to our show sponsors:**





**DALLAS HUNTER JUMPER SCHOLARSHIP CIRCUIT**  
**TEXAS ROSE HORSE PARK**  
 March 23rd, 2019



**DALLAS HUNTER JUMPER SCHOLARSHIP CIRCUIT**  
**TEXAS ROSE HORSE PARK**  
 March 24th, 2019



**SATURDAY- RING 1 - 8:00 AM**

- 113 \$2000 2'6" Hunter Derby**  
 21 Baby Green Hunter U/S  
**A 2'6" Add Back**  
 19 Baby Green Hunter 2'6"  
 22 Jr/Am Hunter 2'6"  
 105 Jr/Am Equitation – Fences  
 24 Jr/Am Hunter U/S  
**I Modified Add Back**  
 25 Modified Ch/Ad 2'6"-2'9"  
 107 Modified Ch/Ad Equitation O/F  
 27 Modified Ch/Ad Hunter U/S  
 \*SCHOOLING BREAK\*  
**B 2'9"-3'3" Add Back**  
 28 Low Hunter 2'9"  
 30 Low Hunter U/S  
 31 Working Hunter 3'  
 109 3' Jr. Am Equitation – Fences  
 33 Working Hunter 3' U/S  
 34 Working Hunter 3'3"  
 36 Working Hunter 3'3" U/S

**SATURDAY RING 3 9:00 AM**

- 37 Baby Jumpers – 2'-2'3"  
 40 Puddle Jumpers– 2'3"-2'6"  
**116 \$500 2'6" Jumper Classic – Table 11b**  
 43 Schooling Jumper – 2'9"-3"  
 44 Schooling Jumper – 2'9"-3'  
 46 Low Jumper – 3'-3'3"  
 47 Low Jumper – 3'-3'3"  
 49 High Jumper – 3'6"  
 50 High Jumper – 3'6"

**SATURDAY- RING 2 9:00 AM**

- C 2' Add Back**  
 7 Open Hunter 2'  
 10 Maiden Hunter 2'  
 101 Maiden Equitation - Fences  
 9 Open Hunter U/S  
 12 Maiden Hunter U/S  
 \*SCHOOLING BREAK\*  
**D 2'3" and Pony Add Back**  
 13 Jr/Am Hunter 2'3"  
 103 Jr/Am Equitation – Fences  
 15 Jr/Am Hunter U/S  
 16 Pony Hunter 2'-2'3"-2'6"  
 17 Pony Hunter 2'-2'3"-2'6"  
 18 Pony Hunter U/S

**SATURDAY RING 4**

**(Will start at conclusion of Derby but not before 10:00)**

- K Walk-Trot Poles- Add Back**  
 52 Walk-Trot Poles  
**L Walk-Trot X-Rails- Add Back**  
 1 Walk-Trot X-Rails  
 3 Walk-Trot X-Rails Flat  
**M Short/Long Stirrup Add Back**  
 4 Short/Long Stirrup Eq. 18"

**SUNDAY – RING 1 – 8:30 AM**

- E 2'6"- Add Back**  
 20 Baby Green Hunter 2'6"  
 23 Jr/Am Hunter 2'6"  
**111 Equitation Challenge**  
 106 Jr/Am Equitation – Flat  
**J Modified Add Back**  
 26 Modified Ch/Ad 2'6"-2'9"  
**111 Equitation Challenge**  
 108 Modified Ch/Ad Equitation – Flat  
 \*SCHOOLING BREAK\*  
**F 2'9"-3'3" Add Back**  
 29 Low Hunter 2'9"  
 32 Working Hunter 3'  
**111 Equitation Challenge**  
 110 3' Jr. Am Equitation – Flat  
 35 Working Hunter 3'3"

**SUNDAY RING 3 8:00 AM**

- 115 \$1,500 2'9"-3' Jumper Classic**  
 38 Baby Jumper – 2'-2'3"  
 39 Baby Jumper – 2'-2'3"  
 41 Puddle Jumper –2'6"  
 42 Puddle Jumper – P & S - 2;6  
 45 Schooling Jumper P&S- 2'9"-3'  
 48 Low Jumper P & S – 3'-3'3"  
 51 High Jumper P&S - 3'6"

**SUNDAY – RING 2 – 9:00 AM**

- G 2' Add Back**  
 8 Open Hunter 2'  
 11 Maiden Hunter 2'  
**112 Equitation Challenge**  
**114 \$500 Jr/Am Hunter Classic**  
 102 Maiden Equitation – Flat  
 \*SCHOOLING BREAK\*  
**H 2'3" Add Back**  
 14 Jr. Am Hunter 2'3"  
**112 Equitation Challenge**  
**114 \$500 Jr/Am Hunter Classic**  
 104 Jr. Am Equitation – Flat

**SUNDAY RING 4 10:00 AM**

- N Walk-Trot Poles- Add Back**  
 53 Walk-Trot Poles  
 54 Walk-Trot Poles Flat  
**O Walk-Trot X-Rails – Add Back**  
 2 Walk-Trot X-Rails  
**P Short/Long Stirrup Add Back**  
 5 Short/Long Stirrup Eq. 18"  
 6 Short/Long Stirrup Eq. – Flat

