

**DALLAS HUNTER JUMPER SCHOLARSHIP CIRCUIT
SEASON OPENER HORSE SHOW
MARCH 24-25, 2018**

Location: Texas Rose Horse Park
14078 State Hwy 110N, Tyler TX 75704
(903)882-8696 www.texasrosehorsepark.com
From I-20 take the TX-110 exit (548), turn south on TX-110 & go approximately one mile. TRHP will be on your left.

Recognized By: Dallas Hunter Jumper Scholarship Circuit
Part of every entry fee is contributed to the Scholarship Fund to be distributed at the annual banquet!

SHOW OFFICIALS

Judges: Hunter: Becky Rainwater
Colleen Wells
Renee Albrecq
Jumper: Cindy Pursell

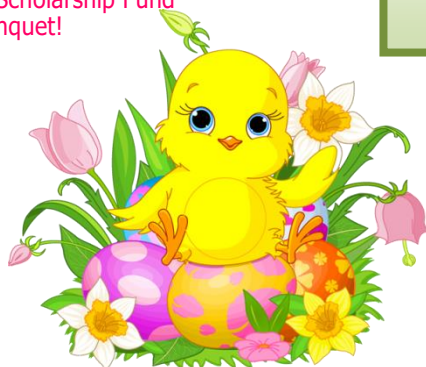
Manager: DHJSC Show Committee

Course Designer: DHJSC Show Committee

Show Office: Laura Brown

Show Committee: Molly Hunt, Julie Holmquest, Gabriele Berta

EMAIL ENTRIES TO:
molly@huntersgatestables.com
ENTRIES DUE: March 19th, 6:00 PM
or receive Late Fees



2018 DHJSC Season Opener Featuring:



\$1,000 DHJSC 2'6" Junior/ Amateur Hunter Derby- Saturday Morning

Sponsored by ALPHA ORTHOPEDICS & SPORTS MEDICINE

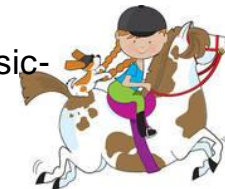
\$1,000 DHJSC 2'9"-3' Jumper Classic- Sunday Morning

\$250 2' & 2'3" Junior/Amateur Hunter Classic- Sunday

Sponsored by MERRIWOOD RANCH

\$250 2'6" Jumper Classic- Saturday

Lead Line Class During Derby Saturday Morning



STALL DECORATING CONTEST

"SPRING HAS SPRUNG"

to be judged Saturday afternoon and announced during the show

Everyone is invited:

Friday Evening Welcome Party & Bonfire-

Sponsored by Stony Glen Stables

Saturday Morning Derby Breakfast

Sponsored by Hunters Gate Stables

Saturday Lunch

Sponsored by DHJSC

Sunday Morning Breakfast during Jumper Classic

Sponsored by Eagle Mountain Equestrian Center


Points, Photos, Info, and more!

www.dallashunterjumper.org

Prizes Provided By:

Dallas Hunter Jumper Scholarship Circuit

Wanna keep up with DHJSC?

Follow us on...  Dallas Hunter Jumper Scholarship Circuit



@dallas_scholarship



@DHJSC1



RULES AND REGULATIONS

ENTRIES: **There will be a post entry fee of \$5 per class if entered after March 19th!**

Class fees are \$15 with the exception of ADDBACKS which are \$25. No numbers will be issued without an open check. Current coggins must be presented to the horse show office for all horses on the grounds.

Please note barn affiliation on entry form and check.

Entries may be emailed to **Molly Hunt** at molly@huntersgatestables.com

HUNTER DERBY AND 2'9"-3' JUMPER CLASSIC are \$50 for members and \$100 for non-members

JUNIOR/AMATEUR HUNTER CLASSIC and 2'6" JUMPER CLASSIC are \$20 for members and \$50 for non-members.

In order to be eligible for Derby or Classics, riders must compete in a full regular division.

FEES & REFUNDS: \$25.00 office and awards fee will be charged for every horse & rider combination. Once the show has started, proper notification of the scratch must be made in the show office BEFORE the start of the class or classes being scratched or else the class fee may be charged. Non-members will be charged a non-member fee of \$30 per show. Returned checks are subject to a \$25 fee. A \$15 service fee may be applied to open checks not closed by the conclusion of the show.

STABLING: Stalls- \$85.00 – Shavings \$10.00 per bag (minimum of 3 bags) – Ground fees - \$35.00 for all non stabling horses. Stall reservations must be made in advance, late stall fees \$100.00

SCHOOLING: Schooling on Friday in all rings from noon to dark and Saturday and Sunday from daybreak to 30 minutes prior to ring starting.

FOOTING: Warm Up areas and Competition arenas are all-weather footing.

DOGS: All dogs on the property must be held on a leash.

RETURNED CHECKS: A \$25.00 fee will be charged for all returned checks.

ATTIRE: SEI APPROVED HELMETS MUST BE WORN BY ALL RIDERS WHILE MOUNTED. Riders must be properly attired – no chaps. Numbers must be worn and clearly visible.

RIBBONS, TROPHIES and CHAMPIONSHIP: All classes receive a prize and 6 ribbons. All Divisions will be awarded Champion and Reserve ribbons using the standard tally system: 10, 7, 5, 3, 2, 1. In the event of a tie, management will break the tie by over fences points. Champion rosette and trophy will be awarded and Reserve rosettes.

CHANGES: Management reserves the right to change, cancel or combine classes, alter courses and do all things necessary to compensate for excessive or inadequate entries. Divisions with less than 3 entries may be canceled or combined.

CONCESSIONS: Concessions Sat. and Sun 7:00 AM to conclusion of show.

RESPONSIBILITY: Submission of entry to these shows constitutes an agreement to the following: Exhibitor agrees to indemnify and hold harmless TRHP and DHJSC officials against any claim, demands, costs and expenses, including reasonable attorney fee for the defense thereof, arising from the conduct or management of Exhibitor's business or its use of the premises or from any breach on the part of Exhibitors of any conditions of this Agreement, or contractors, agents, employees, guests, or invitees in or about the premises. In case of any action or proceeding brought against TRHP and DHJSC Management by reason of any such claim. Exhibitor, upon notice, covenants to defend such action or proceeding by council acceptable to owner. Exhibitor is responsible for his/her own property and TRHP and DHJSC Management is not responsible for accidents, fire, or theft. It is the responsibility of the show management, exhibitors, trainers, and spectators to conduct themselves in a civilized and sportsmanlike manner. It is the responsibility of all trainers and exhibitors to be familiar with the DHJSC Rulebook.

RV Space, golf cart rental, feed orders: [texasrosehorsepark.com/\(903\)882-8696](http://texasrosehorsepark.com/(903)882-8696)

\$1,000 DHJSC 2'6" JUNIOR/AMATEUR HUNTER DERBY:

Class 113 \$50 for members and \$100 for non-members

Class Sponsor: Alpha Orthopedics & Sports Medicine

Fences 2'6", Options 2'9"

Order of go to be posted at 6:00 pm Friday evening. To be held in a two-round format with a Classic Hunter first round and the Top 12 called back for the Handy Hunter second round with up to ten bonus points awarded for handiness. Cutoff to enter or scratch is 6:00 PM Friday. Entries received after this point must go at the top of the order. Scratches received after this point will still be charged for the class.

1st-\$280 2nd-\$200 3rd-\$160 4th-\$140 5th-\$120 6th-\$100

\$1,000 DHJSC 2'9"-3' JUMPER CLASSIC:

Class 115 \$50 for members and \$100 for non-members

2'9"-3' Jumper Classic open only to riders competing in Schooling, Low, or High Jumpers. Order of go to be posted at 6:00 pm Saturday evening. Cutoff to enter or scratch is 6:00 PM Saturday. Entries received after this point must go at the top of the order. Scratches received after this point will still be charged for the class. To be held in Table IIb format.

1st-\$280 2nd-\$200 3rd-\$160 4th-\$140 5th-\$120 6th-\$100

\$250 2'-2'3" JUNIOR/AMATEUR HUNTER CLASSIC:

Class 114 \$20 for members and \$50 for non-members.

Class Sponsor: Merriwood Ranch

Awards Sponsor: Hunters Gate Stables

To be held in Ring 2 on Sunday. Open to 2' and 2'3" riders only. First round to be scored from hunter round. Second classic round to follow first round. Highest cumulative score will win. All classic rounds must be over the highest height at which the horse competes.

1st-\$70 2nd-\$50 3rd-\$40 4th-\$35 5th-\$30 6th-\$25

\$250 2'6" JUMPER CLASSICS:

Class 116 \$20 for members and \$50 for non-members.

Awards Sponsor: Personally Preppy

2'6" Jumper Classic open only to riders competing in Baby and Puddle jumpers. Cutoff to enter or scratch 2'6" Jumper Classic is 8:00 AM Saturday. Entries received after this point must go at the top of the order. Scratches received after this point will still be charged for the class.

1st-\$70 2nd-\$50 3rd-\$40 4th-\$35 5th-\$30 6th-\$25

Lead Line:

Class 55 Participation is Free

Open to riders 8yrs and under. Participants may not enter any other division at this show. All horses/ponies must be lead by person over 12yrs of age. Will be held during the first and second round of Derby Saturday morning.

Hunter Divisions

Classes will be judged on performance and soundness

Individual Classes: \$15, Section Fee: \$45



Division 3. Open Hunter – 2'--2018 Division Sponsor Hennington Family

Open to ALL horses and riders. Fences 2', No Oxers!
7,8, 9 (U/S)

Division 4. Maiden Hunter - 2'--2018 Division Sponsor Merriwood Ranch

Open to any junior/amateur rider who has not previously won four (4) blue ribbons over fences at 2' or higher in DHJSC or similar shows. Fences 2'
10,11, 12 (U/S)

Division 5. Junior/Amateur Hunter--2'3"--2018 Division Sponsor Eagle Mountain Equestrian Center

Open to junior and amateur riders. Fences 2'3"
13,14, 15 (U/S)

Division 6. Pony Hunter--2018 Division Sponsor Stony Glen Stables

Open to junior riders on ponies. Fences: small 2', medium 2'3", large 2'6"
16, 17, 18 (U/S)

Division 7. Baby Green Hunter--2018 Division Sponsor Roberts Family

Open to horses and ponies in their first two years of showing. Fences 2'6"
19,20, 21 (U/S)

Division 8. Junior/Amateur Hunter – 2'6"-- 2018 Division Sponsor Blaylock Family

Open to junior and amateur riders. Fences 2'6" -
22,23,24 (U/S)

Division 9. Modified Child/Adult Hunter— 2018 Division Sponsor Lodestar Stables

Open to any junior or amateur riders. Fences 2'6"-2'9" -
25,26, 27 (U/S)

Division 10. Low Hunter-- 2018 Division Sponsor Whittle Family

Open to ALL horses and riders. Fences 2'9"
28,29, 30 (U/S)

Division 11. 3' Working Hunter-2018 Division Sponsor Spellbound Farm

Open to ALL horses and riders. Fences 3'
31, 32, 33 (U/S)

Division 12. 3'3" Working Hunter--2018 Division Sponsor Hunters Gate Stables

Open to ALL horses and riders. Fences 3'3"
34, 35, 36 (U/S)

Jumper Divisions

Individual Classes: \$15, Section Fee: \$45

Division 13 – Baby Jumpers (2') – 2018 Division Sponsor Wood Family

37,38,39

Division 14 - Puddle Jumpers (2'3"-2'6") –2018 Division Sponsor StoryBook Sport Horses

40,41,42 P&S

Division 15 – Schooling Jumpers (2'9"-3') –2018 Division Sponsor The Jumpers of Merriwood

43,44,45 P&S

Division 16 – Low Jumpers (3'-3'3") –2018 Division Sponsor Wood Family

46,47,48 P&S

Division 17 - High Jumpers (3'6") -2018 Division Sponsor QN Management Solutions, Inc.

49,50,51 P&S

Add Backs - \$25.00

A, E – 2'6"- I, J –Modified, B, F 2'9 – 3'3" C, G – 2' D,H– 2'3 - Pony
K, N – Walk/Trot Poles L, O – Walk/Trot Crossrails M, P – Short Stirrup

Hunt Seat Equitation Divisions

All classes are to be judged on seat, hands, guidance and control of mount.

Individual Classes: \$15, Section Fee: \$45

Division 18. Walk-Trot Rider Equitation over Poles--2018 Division Sponsor Hidden Oak Ranch

Open to riders in their first year of showing. Can only cross-enter into Div. 1.
52, 53, 54 (Flat)

Division 1. Walk-Trot Rider Equitation over Cross Rails--2018 Division Sponsor Hidden Oak Ranch

Open to riders in their first two years of showing. Fences less than 18"
1,2, 3 (Flat)

Division 2. Short/Long Stirrup Equitation--2018 Division Sponsor Bridlewood Stable & Equestrian Center

Open to riders in their first two years of showing. Fences 18"
4,5, 6 (Flat)

101 Maiden Equitation – Fences 2" Entry Fee: \$15

2018 Year sponsor Boswell Family

102 Maiden Equitation – Flat Entry Fee: \$15

103 Jr/Am Equitation – Fences 2.3" Entry Fee: \$15

2018 Year sponsor Markelle Stables

104 Jr/Am Equitation – Flat Entry Fee: \$15

2018 Year sponsor Markelle Stables

105 Jr/Am Equitation – Fences 2'6" Entry Fee: \$15

2018 Year sponsor The Hunters of Merriwood

106 Jr/Am Equitation – Flat Entry Fee: \$15

107 Modified Child/Adult Equitation – 2'6"-2'9" Entry Fee: \$15

2018 Show sponsor Larae Stuemke-Younique

108 Modified Child/Adult Equitation – Flat Entry Fee: \$15

2018 Show sponsor Judge Family

109 Jr/Am Equitation – Fences 3' Entry Fee: \$15

110 Jr/Am Equitation/Flat Entry Fee: \$15

111 Equitation Challenge- Ring 1 Entry Fee: \$15

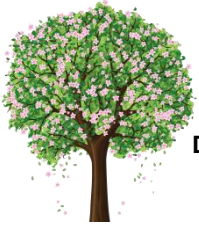
2018 Year sponsor Hunt Family

112 Equitation Challenge- Ring 2 Entry Fee: \$15

2018 Year sponsor Robinson Family

Thank you to our show sponsors:





**DALLAS HUNTER JUMPER SCHOLARSHIP CIRCUIT
TEXAS ROSE HORSE PARK
March 24th, 2018**



**DALLAS HUNTER JUMPER SCHOLARSHIP CIRCUIT
TEXAS ROSE HORSE PARK
March 25th, 2018**



SATURDAY- RING 1 - 8:00 AM

- 113 \$1000 2'6" Hunter Derby**
 21 Baby Green Hunter U/S
A 2'6" Add Back
 19 Baby Green Hunter 2'6"
 22 Jr/Am Hunter 2'6"
 105 Jr/Am Equitation – Fences
 24 Jr/Am Hunter U/S
I Modified Add Back
 25 Modified Ch/Ad 2'6"-2'9"
 107 Modified Ch/Ad Equitation O/F
 27 Modified Ch/Ad Hunter U/S
SCHOOLING BREAK
B 2'9"-3'3" Add Back
 28 Low Hunter 2'9"
 30 Low Hunter U/S
 31 Working Hunter 3'
 109 3' Jr. Am Equitation – Fences
 33 Working Hunter 3' U/S
 34 Working Hunter 3'3"
 36 Working Hunter 3'3" U/S

SATURDAY RING 3 9:00 AM

- 37 Baby Jumpers – 2'-2'3"
 40 Puddle Jumpers– 2'3"-2'6"
116 \$250 2'6" Jumper Classic – Table 11b
 43 Schooling Jumper – 2'9"-3"
 44 Schooling Jumper – 2'9"-3"
 46 Low Jumper – 3'-3'3"
 47 Low Jumper – 3'-3'3"
 49 High Jumper – 3'6"
 50 High Jumper – 3'6"

SATURDAY- RING 2 9:00 AM

- C 2' Add Back**
 7 Open Hunter 2'
 10 Maiden Hunter 2'
 101 Maiden Equitation - Fences
 9 Open Hunter U/S
 12 Maiden Hunter U/S
SCHOOLING BREAK
D 2'3" and Pony Add Back
 13 Jr/Am Hunter 2'3"
 103 Jr/Am Equitation – Fences
 15 Jr/Am Hunter U/S
 16 Pony Hunter 2'-2'3"-2'6"
 17 Pony Hunter 2'-2'3"-2'6"
 18 Pony Hunter U/S

SATURDAY RING 4

- (Will start at conclusion of Derby
but not before 10:00)**
K Walk-Trot Poles- Add Back
 52 Walk-Trot Poles
L Walk-Trot X-Rails- Add Back
 1 Walk-Trot X-Rails
 3 Walk-Trot X-Rails Flat
M Short/Long Stirrup Add Back
 4 Short/Long Stirrup Eq. 18"

SUNDAY – RING 1 – 8:30 AM

- E 2'6"- Add Back**
 20 Baby Green Hunter 2'6"
 23 Jr/Am Hunter 2'6"
111 Equitation Challenge
 106 Jr/Am Equitation – Flat
J Modified Add Back
 26 Modified Ch/Ad 2'6"-2'9"
111 Equitation Challenge
 108 Modified Ch/Ad Equitation – Flat
SCHOOLING BREAK
F 2'9"-3'3" Add Back
 29 Low Hunter 2'9"
 32 Working Hunter 3'
111 Equitation Challenge
 110 3' Jr. Am Equitation – Flat
 35 Working Hunter 3'3"

SUNDAY RING 3 8:00 AM

- 115 \$1,000 2'9"-3' Jumper Classic**
 38 Baby Jumper – 2'-2'3"
 39 Baby Jumper – 2'-2'3"
 41 Puddle Jumper –2'6"
 42 Puddle Jumper – P & S - 2;6
 45 Schooling Jumper P&S- 2'9"-3'
 48 Low Jumper P & S – 3'-3'3"
 51 High Jumper P&S - 3'6"

SUNDAY – RING 2 – 9:00 AM

- G 2' Add Back**
 8 Open Hunter 2'
 11 Maiden Hunter 2'
112 Equitation Challenge
114 \$250 Jr/Am Hunter Classic
 102 Maiden Equitation – Flat
SCHOOLING BREAK
H 2'3" Add Back
 14 Jr. Am Hunter 2'3"
112 Equitation Challenge
114 \$250 Jr/Am Hunter Classic
 104 Jr. Am Equitation – Flat

SUNDAY RING 4 10:00 AM

- N Walk-Trot Poles- Add Back**
 53 Walk-Trot Poles
 54 Walk-Trot Poles Flat
O Walk-Trot X-Rails – Add Back
 2 Walk-Trot X-Rails
P Short/Long Stirrup Add Back
 5 Short/Long Stirrup Eq. 18"
 6 Short/Long Stirrup Eq. – Flat



Q/N Management Solutions, Inc.

2018 Show Schedule

March 24-25: Season Opener @TRHP
April 7-8: Merriwood
April 21: StoryBook
April 22: Eagle Mountain Eq
May 5-6: Stony Glen
May 19-20: Hunters Gate
June 1-3: Club Show @ Valhalla
June 17: Red Hawk
June 30-July 1: Valhalla
July 14-15: Texas Rose Horse Park
September 2: Prospering Farm
September 22-23: Valhalla
September 30: Red Hawk
October 13-14: Merriwood
October 20-21: Stony Glen
November 3-4: Year End Show @ TRHP



SPONSORSHIPS AVAILABLE!

Sponsor a Division For the Year: \$200
Sponsor Class for the year \$75

Sponsor Division at Opening show: \$75
Sponsor Class at Opening show: \$25

Contact Molly Hunt molly@huntersgatestables.com

